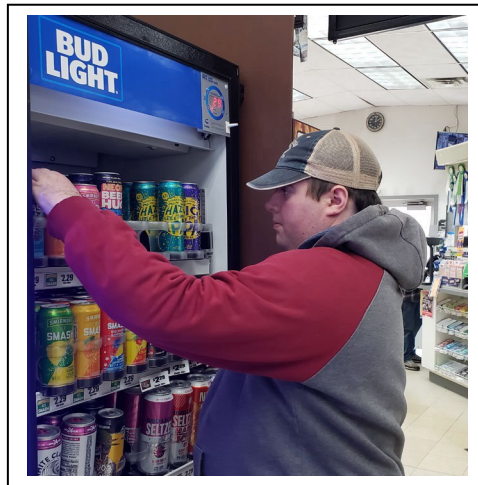


Job Coach

Full Time; Approximately 30-32 hours/week
Primarily Monday – Friday daytime hours

Assist individuals with intellectual/developmental disabilities to develop, improve and maintain work related skills at community-based employment by providing individualized training, support and encouragement, primarily within Ozaukee and surrounding counties.



You'll ...

- Be actively helping individuals improve and maintain work-related skills.
- Provide job training in partnership with the employer related to job tasks, work habits and employment requirements.
- Identify barriers and solutions to work related needs.
- Facilitate social integration and interdependence or natural supports.

You'll ...

- Need to have a valid driver's license with clear record
- Need to work both independently and as a team
- Successfully complete required Background Checks

Submit your resume or letter of interest to:

lpoor@portalinc.org

Learn more of Portal, inc and the individuals we are honored to serve and support at:

www.portalinc.org

